



Kestral House, London
Nine Elms SW8

GARTONJONES.COM



Kestral House, London Nine Elms, SW8

£450 Per Week

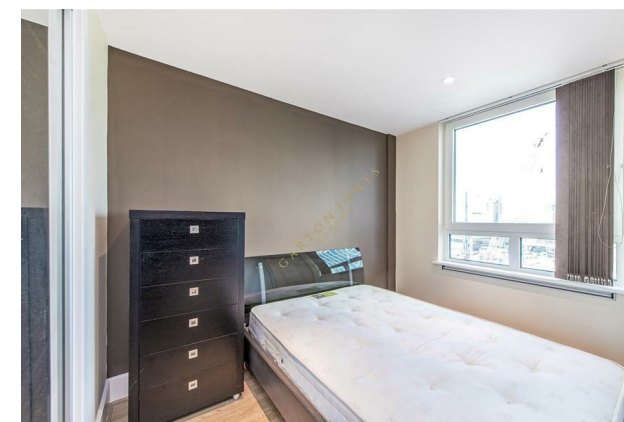
A bright and spacious apartment comprising reception, dining area, modern kitchen, luxury bathroom and a private terrace with a view of the river. The property is located in this sought after development situated on the banks of the River Thames. The property offers great storage with wood flooring throughout also benefits from a south-facing aspect. St George Wharf is situated 1 minutes' walk to Vauxhall Underground Station and the excellent transport hub including Mainline, Tube and bus services. The development features a 24-hour concierge, riverside piazza, on-site amenities including a Tesco Local, cafes, bars, The Gym and river taxi service. The property is offered furnished and available Now.

- 477.00 sq.ft
- Studio Suite
- Reception Room
- Bathroom
- Modern Integrated Kitchen
- Balcony
- Wood Flooring
- 24 Hour Porter and a Lift
- Moments from The Excellent Transport Services of Vauxhall
- On-Site Amenities Including a Tesco Local, Dry Cleaners, Bars & Restaurants & River Taxi Service

GARTON JONES.COM

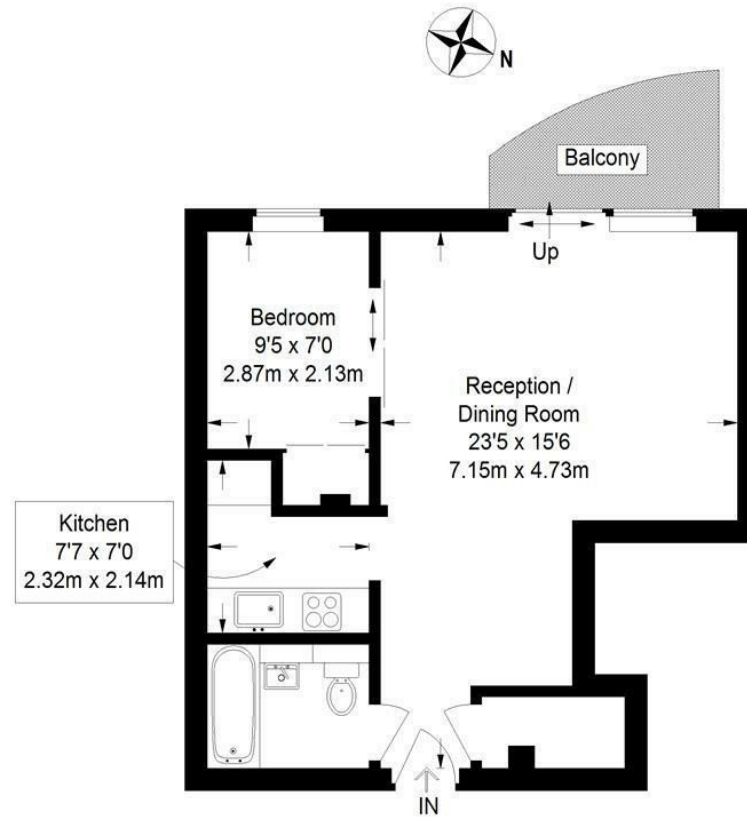
9 Albert
Embankment
London
SE1 7SP

Lettings:
+44 (0) 20 7735 1888
nineelms@gartonjones.com
www.gartonjones.com



Kestrel House

Approximate Gross Internal Area
477 sq ft / 44.3 sq m



Not to scale, for guidance only and must not be relied upon as a statement of fact.
All measurements and areas are approximate only and have been prepared in
accordance with the current edition of the RICS Code of Measuring Practice.

